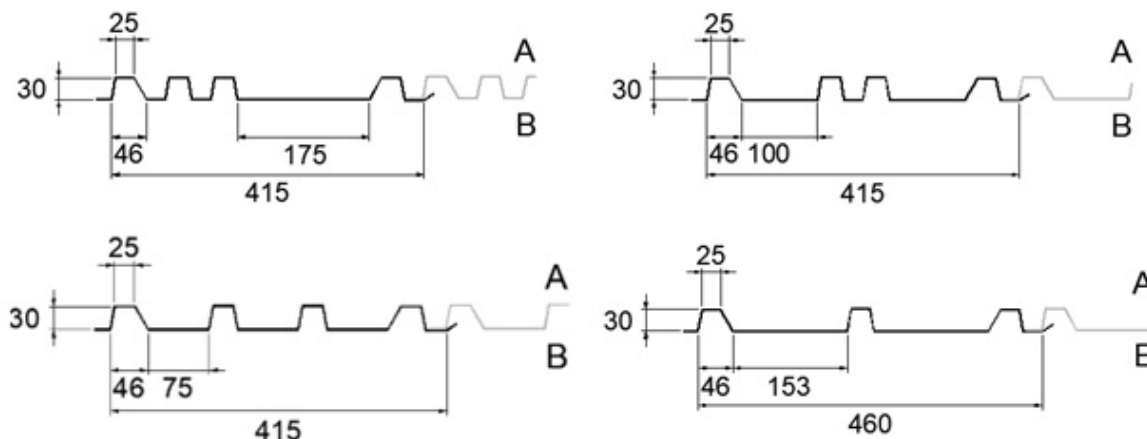


TECHNICAL DATA SHEET

SAB-Merlon 30/415-175 ~ 30/415-100 ~ 30/415-75 ~ 30/460



Gauge	Weight SAB Merlon 30/415-175	Weight SAB Merlon 30/415-100	Weight SAB Merlon 30/415-75	Weight SAB Merlon 30/460
0,63 mm	-	7,41 kg/m ²	7,41 kg/m ²	-
0,75 mm	8,82 kg/m ²	8,82 kg/m ²	8,82 kg/m ²	7,96 kg/m ²
0,88 mm	10,35 kg/m ²	10,35 kg/m ²	10,35 kg/m ²	9,34 kg/m ²

STEEL GRADE

Yield strength minimum 280 N/mm², zinc layer can be Z, AZ, ZA or ZM.

SUSTAINABILITY

Environmentally relevant product information (EPD) are published on www.sabprofil.com.

QUALITY CONTROLE

We guarantee that the product has been produced according the valid standards and directives

REACTION TO FIRE

Incombustible, class A1 according to EN 13501-1 for coating systems unto 65 µm

SPANS

SAB advices for an as flat as possible façade a maximum load span of 1500 mm. This load span is valid in all wind areas, vacant and till a construction height of 15 m.

Maximum length 6000 mm.

STANDARDS

Production according ISO 9001, ISO 14001, ISO 45001 and BES 6001

Tolerances according PPA-Europe Quality Regulations

Steel thickness: EN 10143 is used as a basis for the gauge tolerances, applied to the steel core only and excluding zinc layer and organic coating.

IJsselstein, June 2025